

TSU-4RW-N6*

High Performance Undercounter Refrigerator

+2 to +8°C Undercounter Refrigerator

3.0 cu.ft. | 85 L



TSU-4RW-N6

TSU-4RW-N6 high performance undercounter refrigerators are designed to meet current and evolving CDC, NSF, and ANSI guidelines for vaccine storage. The TSU-4RW-N6 is ENERGY STAR® Certified and capable of maintaining the 5°C setpoint standard for storing vaccines with a +/- uniformity of 3°C to better reduce the risk of freezing vital vaccines and biologics. Built with accessibility in mind, this unit is ADA compliant and engineered with a glass door for easy visibility of stored contents.

Meeting Regulatory Standards

Current and emerging guidelines from the CDC, NSF, and ANSI involve strict storage requirements for vaccines and biologics. The TSU-4RW-N6 is purpose-designed to meet these evolving guidelines as they pertain to temperature control, uniformity, and recovery. This unit is UL 471 listed, and meets all electrical standards required by most equivalent Nationally Recognized Testing Laboratories (NRTL).

Ease of Use and Accessibility

With a compact footprint, the TSU-4RW-N6 is designed to be incorporated in ADA compliant workspaces, and fits under most tables, cabinets, and lab benches. A convenient glass door provides visibility into the interior of the unit to avoid unnecessary door openings. In the event an open door is forgotten, the self-closing door will mitigate scenarios that could result in lost product. An optional stacking accessory is available to maximize storage capacity when space constraints become an issue.

Temperature Uniformity Ensures Product Safety

Strict temperature control keeps stored product within the CDC recommended 2-8°C temperature range for optimal vaccine storage. Many vaccines risk inactivation if allowed to freeze. The TSU-4RW-N6 is designed to prevent interior temperature from dropping below 2°C at any location within the cabinet, even if the unit is empty. By contrast, interior temperatures are engineered to cool back to setpoint temperatures within 15 minutes of a 3 minute door opening.



Display and Monitoring

An unweighted temperature probe and temperature display in 0.1°C increments give users the most accurate temperature readings—all in real time. Easy-to-use touchpad display, and microprocessor controller provide dependable control of interior setpoints, while an electronic key lock prevents accidental setpoint changes.



Security and Alarm Notification

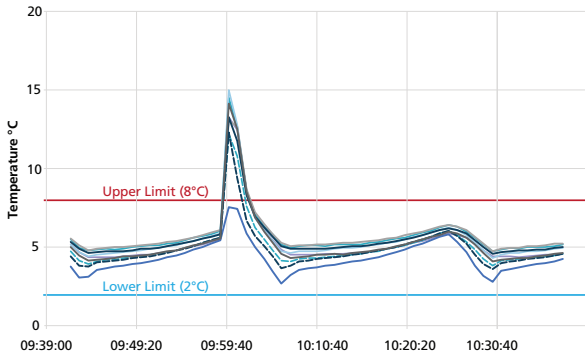
High and low temperature alarms notify users when temperature excursion events are occurring. Alarm delay time is adjustable to meet different user needs and working conditions. A physical key lock at the top of the unit makes it possible to store important samples and controlled substances.



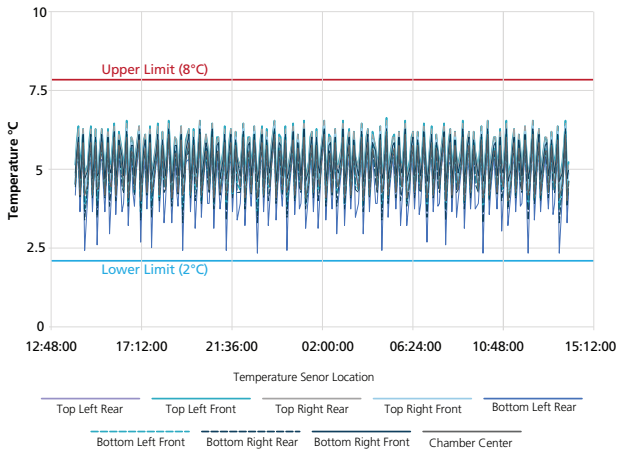
Energy and Sustainability

This Energy Star certified undercounter provides energy efficiency and sustainability, without compromising performance. Traditional HFC refrigerants have been replaced with environmentally friendly HC refrigerants to meet Significant New Alternatives Policy (SNAP) guidelines for low global warming and ozone depleting substances.

Door Opening Recovery, 1 Minute

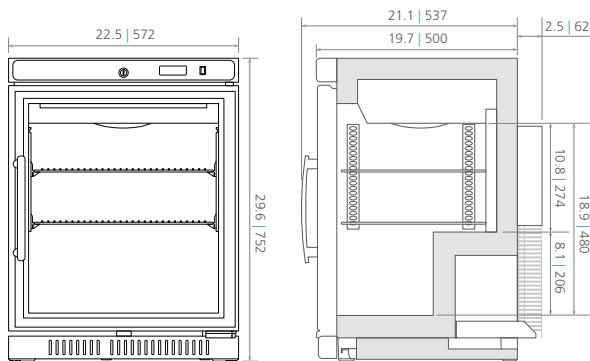


Uniformity, Steady State, 5°C



Dimensions

Unit : inch | mm



| Model Number | | TSU-4RW-N6 |
|--|-----------------|---|
| Exterior Dimensions (W x D x H) ¹⁾ | inches mm | 22.5 x 22.1 x 29.6 572 x 562 x 751 |
| Interior Dimensions (W x D x H) | inches mm | 18.5 x 14.6 x 18.9 471 x 370 x 480 |
| Volume | cu.ft. liters | 3.0 85 |
| Net Weight | lbs kg | 114 52 |
| Performance | | |
| Warranty ²⁾ | | 2 years parts / labor |
| Cooling Performance ³⁾ | °C | 3 to 7 |
| Temperature Setting Range | °C | 3 to 7 in 0.1° increments |
| Temperature Control Range ³⁾ | °C | 2 to 8 in 0.1° increments |
| Control | | |
| Controller | | Microprocessor (one control probe and one monitor probe) |
| Display | | LED |
| Temperature Set Method | | Touchpad |
| Temperature Sensor | | Thermistor |
| Refrigeration | | |
| Refrigeration System | | Single reciprocal type compressor |
| Compressor | W | (1) 174 |
| Refrigerant | | R-600a |
| Defrost | | Automatic cycle |
| Insulation Material, SNAP Compliant | | Rigid polyurethane, foamed-in-place, low GWP (cyclopentane) |
| Insulation Thickness | inches mm | Right, left, back, top: 2.0 50 Bottom: 2.2 55 |
| Construction | | |
| Exterior Material | | Painted steel |
| Interior Material | | Painted steel with stainless steel floor |
| Outer Door | qty | 1 (glass, self closing) |
| Key Lock | qty | Standard door lock |
| Wire Shelves, Vinyl Coated | qty | 2 (adjustable) |
| Shelf Dimension (W x D) | inches mm | 17.3 x 14.0 440 x 355 |
| Max. Load Per Shelf | lbs kg | 26.5 12 |
| Access Port | qty | 1 (standard) |
| Access Port Position | | Bottom of back of product |
| Access Port Diameter | inches mm | 0.6 16 |
| Leveling Feet | qty | 4 |
| Alarms (V=Visual, B=Buzzer) | | |
| High Temperature | | V-B |
| Low Temperature | | V-B |
| Door Alarm | | V-B |
| Diagnostics | | V |
| Electrical and Noise Level | | |
| Power Supply | | 115V, 60Hz, 1Ø, NEMA 5-15P requires NEMA 5-15R receptacle |
| Options | | |
| 4-20mA Analog Output | | MTR420MAL |
| Blackout Panel | | BPANELTSU |
| Stacking Kit | | TSU-4RW STKBRACKET |
| Optional Communication System | | |
| Wireless, Cloud-Based, Automatic Data Management | | LabAlert® Monitoring System |

¹⁾ External dimensions of main cabinet only. Depth is 23.6" (600 mm) including the door handle

²⁾ Current warranty offered at time of printing and may be subject to change; US and Canada only

³⁾ Air temperature measured at refrigerator center, ambient temperature +24°C, no load

Specifications are subject to change without notice.

For latest specification information contact PHC Corporation of North America at info@us.phcd.com. Performance data herein is based on independent testing at time of publication

*TSU-4RW-N6 is manufactured by Turbo Air Inc. and distributed by PHC Corporation of North America.